



black

dark navy

khaki



**9522 Iron Horse**

Microfiber jacket with nylon lining, hidden hood, elastic cuffs & waistband, front snap closure pockets and inside right chest security pocket. Available S-XXXL in black, dark navy & khaki.



bright navy/black

reed/black

**9546 Beaumont**

Nylon oxford, fully lined with nylon tafetta, front & inside storm flaps, front zipper hand pockets, zipper front chest pocket, elastic waist & cuffs, inside right chest security pocket. Available in S-XXXL in bright navy/black & reed/black.



yellow

burnt red



black



dark navy

NEW  
ARRIVING FALL '03

9516 Legacy

Hooded nylon jacket lined in heather grey sweatshirt fleece, front storm flat covering zipper, front drawcord waist & elastic cuffs and inside right chest security pocket. Available M-XXL in black, burnt red, dark navy & yellow.



khaki/black

dark navy/burnt red



black/heather grey

9528 Deerfield

Microfiber jacket with 7 oz. anti-pill poly fleece lining, quilt lined sleeves, spandex binding on cuffs & waistband, raglan sleeves, front zippered pockets & inside right chest security pocket. Available S-XXXL in black/heather grey, dark navy/burnt red & khaki/black.



**9851 1/2 Zip Performance Fleece Pullover**

(left) 9.6 oz. 100% polyester pill resistant, drawcord and toggle hem closure, trimmed in durable black tadel with black lower slash zip pockets. Available S-XXL in black, charcoal, cobalt, forest green, ink, red & yellow.



**9882 Full Zip Performance Fleece Jacket**

(right) 9.6 oz. 100% polyester pill resistant jacket with draw cord and toggle hem closure, trimmed in durable black tadel with black lower slash zip pockets. Available S-XXL in black, charcoal, forest green & ink.



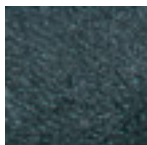
**9803 Full Zip Performance Fleece Vest**

(left) 9.6 oz. 100% polyester pill resistant, drawcord and toggle hem closure trimmed in durable black tadel with black lower slash zip pockets. Available S-XXL in black, charcoal, cobalt, forest green, ink, red & yellow.

black



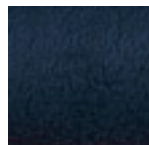
charcoal



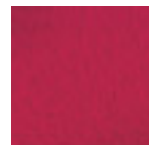
cobalt



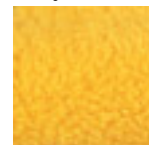
ink



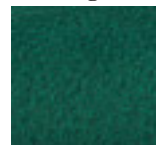
red



yellow



forest green





**744A Elk River Full Zip Fleece** (right) 7.09 oz. pill resistant, 100% polyester, onseam pockets, elastic cuffs & waistband. Available M-XXL in black, charcoal, forest green & navy.

charcoal

forest green

black

navy



black

red

forest green

charcoal

navy

**AUBURN<sup>®</sup>**  
**SPORTSWEAR**

**735A Elk River Fleece Vest** (above) 7.09 oz. pill resistant, 100% polyester, onseam pockets, elastic waistband with full zip front. Available M-XXL in black, charcoal, forest green, navy & red.

**736A Elk River Fleece Pullover** (below) 1/4 Zip, 7.09 oz. pill resistant, 100% polyester, onseam pockets, elastic cuffs & waistband. Available S-XXL in black, charcoal, forest green, graphite & navy.



charcoal

black

navy

forest green

graphite



khaki/navy



navy/gold



black/red

**725A Reversible Jacket**

(above) 100% nylon tussah reverses to 100% nylon taffeta. Two-toned reversible jacket with side entry pockets features full front zipper with Auburn Logo zipper pull tab. Self-fabric elasticized waist and cuffs. Side one features double welt pockets with color accent and caped opening for decoration accessibility. Side two features zip pockets with accent tabs. Water repellent. Available S-XXL in black/red, navy/gold & khaki/navy.

**AUBURN<sup>®</sup>**  
**SPORTSWEAR**



black/royal



navy/red

**501A Urban Coaches Jacket**

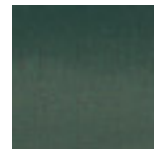
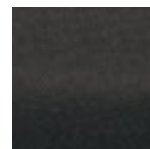
(above) 100% nylon shell with reflective tape from top of shoulder to bottom of sleeve with a lining of jersey fleece fabric consisting of 75% polyester/13% rayon/11% cotton. Available M-XXL in navy/red & black/royal.



black

forest

navy



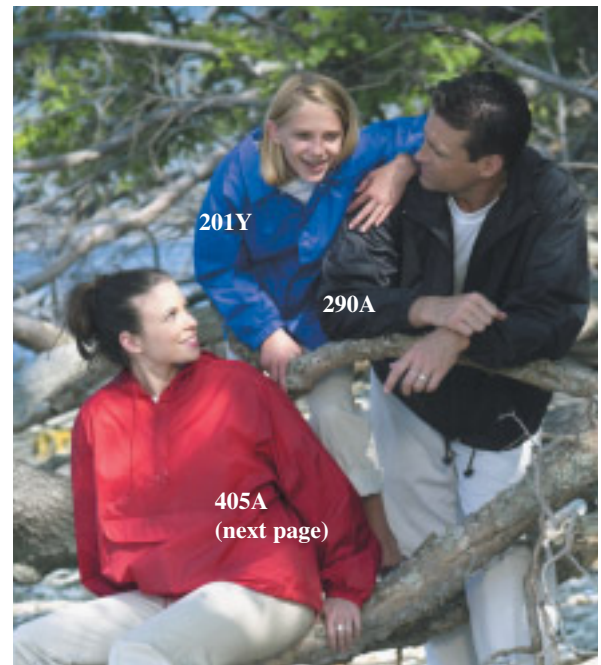
**208A Hooded Coaches Jacket**

(above) Water repellent nylon taffeta shell, matching kasha lining, slash pockets, drawstring in hood & waist and knit cuffs. Available M-XXL in black, forest & navy.



black

navy



201Y

290A

405A  
(next page)

# AUBURN<sup>®</sup> SPORTSWEAR

## 201Y Youth Coaches Jacket

(below) Water repellent nylon taffeta shell, kasha lining, slash pockets, drawstring bottom, byron collar, raglan sleeves, elastic in cuffs. Available S-L in black, navy, red & royal.



## 201A Coaches Jacket

(above) Water repellent nylon taffeta shell, kasha lining, slash pockets, drawstring bottom byron collar, raglan sleeves, elastic in cuffs. Available S-XXL in black<sup>2x</sup>, forest, maroon, navy<sup>3x</sup>, red<sup>3x</sup>, royal<sup>3x</sup> & white<sup>3x</sup>.

white

royal

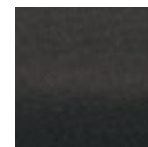
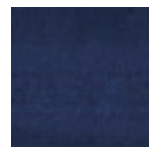
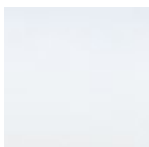
red

navy

maroon

black

forest



# AUBURN<sup>®</sup> SPORTSWEAR

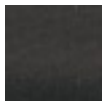


black

navy

red

royal

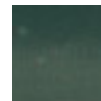


black

hunter

navy  
nautical  
yellow

navy



### 405A Hooded Pouch Jacket

(above) 100% nylon taffeta featuring 1/4 zip front, drawstring hood, zipper pouch with flap, shirred elastic cuffs, drawstring bottom, set-in sleeves. Jacket folds into zipper pouch pocket with drawstring for easy carrying, water repellent. Available S-XXL in black, navy, red & royal.

### 2002A Hooded Pullover Anorak

(above) 100% nylon taffeta, half-zip hooded pullover, storm flaps with snaps, slash pockets, zippered pouch for self storage, drawcords on hood & bottom hem with cordlocks. Available M-XXL in black, hunter, nautical yellow, navy.



safety green



safety orange

**NEW!**

### HV201 High Visibility Lined Coaches Jacket

(above) 100% polyester shell, kasha lining, slash pockets, byron collar, set-in sleeves, elastic cuffs and drawstring bottom, water repellent. Available S-XXL in safety green.

**NEW!**

### HV201R High Visibility Lined Coaches Jacket

(above) 100% polyester shell, 2" wide retroreflective stripes, kasha lined, byron collar, set-in sleeves, elastic cuffs, slash pockets and drawstring bottom, water repellent. Available S-XXL in safety orange.

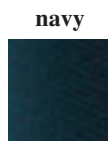
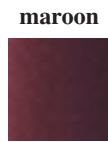
**AVAILABLE FOR DROP SHIPMENT ONLY!**

**AUBURN®  
SPORTSWEAR**

**402A Poplin Baseball Jacket**  
(right) water repellent 75/25 polyester/cotton poplin shell, 100% polyester kasha lining, with two front slash pockets, raglan sleeves, solid color matching knit collar, cuffs & waistband. Available S-XXL in black, navy, royal & tan.



**600A Solid Satin Baseball Jacket**  
(above) Water repellent nylon satin shell, kasha lining, solid knit collar, cuffs & waistband, slash pockets, raglan sleeves. Available S-XXL in black<sup>3x</sup>, navy<sup>3x</sup>, red<sup>3x</sup>, royal<sup>3x</sup> & white.



**603A Satin Quilt Lined Baseball Jacket**  
(above) Water repellent nylon satin shell, nylon quilt lining, white striped knit collar, cuffs & waistband, slash pockets, raglan sleeves. Available S-XXL in black, navy, red & royal.



**602A Satin Quilt Lined Baseball Jacket**  
(above) Water repellent nylon satin shell, kasha lining white striped knit collar, cuffs & waistband, slash pockets, raglan sleeves. Available S-XXL in black<sup>3x</sup>, maroon, navy<sup>3x</sup>, red<sup>3x</sup> & royal<sup>3x</sup>.



**602Y Youth Satin Baseball Jacket**  
(above) Water repellent nylon satin shell, kasha lining, slash pockets, white striped knit collar, cuffs & waistband, raglan sleeves. Available S-L in black, navy, red, royal.