



1715B

LIST 22.90

Style: Youth Authentic Pro-Style
 Button Front Jersey
 Fabric: "Poly-Tuff" 150 denier texturized poly-mesh
 Features: Long scoop tail
 Reinforced construction
 Sizes: S - L
 Same product for adult is: 1725B - Page 5

BODY COLORS

- | | | | |
|-------------|--|----------------|--|
| 1 - Royal | | 8 - Orange | |
| 2 - Scarlet | | 9 - Maroon | |
| 3 - Kelly | | 10 - Teal | |
| 4 - Black | | 22 - Purple | |
| 5 - White | | 26 - Dk. Green | |
| 6 - Gold | | 33 - Silver | |
| 7 - Navy | | | |



1819P

LIST 14.90

Style: Youth 2 Button Placket "Cap Sleeve" Jersey
 Fabric: 65% polyester / 35% cotton
 Features: Popular "Cap Sleeve" design
 Reinforced construction
 Sizes: S - L
 Same product for adult is: 1829P - Page 7

BODY COLOR

- | | | | |
|-------------|--|-------------|--|
| 1 - Royal | | 7 - Navy | |
| 2 - Scarlet | | 10 - Teal | |
| 5 - White | | 22 - Purple | |
| 6 - Gold | | 33 - Silver | |
| 7 - Navy | | | |
| 10 - Teal | | | |
| 14 - Ash | | | |
| 33 - Silver | | | |



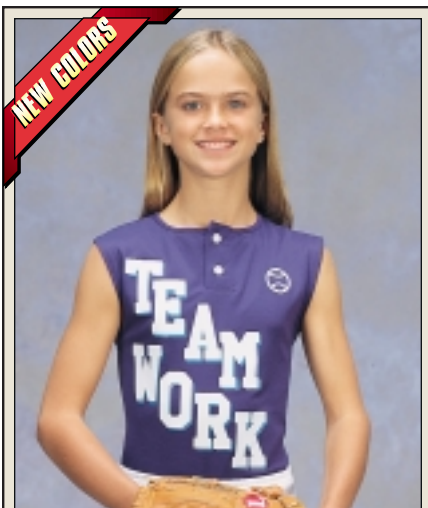
1813P

LIST 14.90

Style: Youth 2 Button Placket Front Jersey
 Fabric: 70 denier texturized polyester mesh
 Features: Popular sleeveless design
 Reinforced construction
 Sizes: S - L
 Same product for adult is: 1823P - Page 6

BODY COLORS

- | | | | |
|-------------|--|-------------|--|
| 1 - Royal | | 7 - Navy | |
| 2 - Scarlet | | 10 - Teal | |
| 4 - Black | | 22 - Purple | |
| 5 - White | | 33 - Silver | |



1718P

LIST 14.90

Style: Youth 2 Button Placket Front Jersey
 Fabric: 65% polyester / 35% cotton
 Features: Popular sleeveless design
 Reinforced construction
 Sizes: S - L
 Same product for adult is: 1728P - Page 6

BODY COLORS

- | | | | |
|-------------|--|----------------|--|
| 1 - Royal | | 9 - Maroon | |
| 2 - Scarlet | | 10 - Teal | |
| 3 - Kelly | | 14 - Ash | |
| 4 - Black | | 22 - Purple | |
| 5 - White | | 26 - Dk. Green | |
| 6 - Gold | | 33 - Silver | |
| 7 - Navy | | 44 - Col. Blue | |
| 8 - Orange | | | |



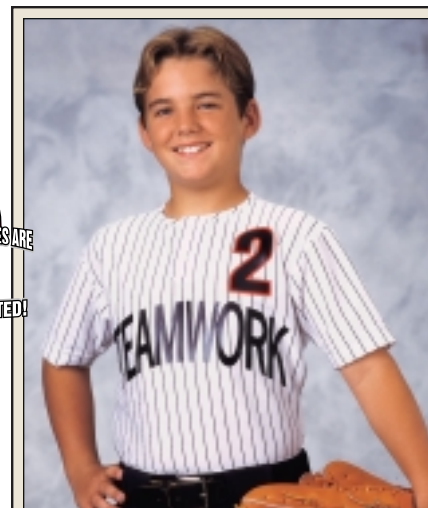
1816P

LIST 16.90

Style: Youth 2 Button Placket Front Jersey
 Fabric: Soft and thick
 50% polyester / 50% cotton pinstripes
 Features: Popular sleeveless design
 Knitted-in stripes
 Reinforced construction
 Sizes: S - L
 Same product for adult is: 1826P - Page 8

BODY COLORS

- | | |
|------------------------------|--|
| 1P - White/Royal Pinstripe | |
| 2P - White/Scarlet Pinstripe | |
| 4P - White/Black Pinstripe | |
| 7P - White/Navy Pinstripe | |
| 10P - White/Teal Pinstripe | |
| 22P - White/Purple Pinstripe | |



1719P

LIST 16.90

Style: Youth 2 Button Placket Front Jersey
 Fabric: Soft and thick
 50% polyester / 50% cotton
 Features: Knitted-in stripes
 Reinforced construction
 Sizes: S - L
 Same product for adult is: 1729P - Page 9

BODY COLORS

- | | |
|------------------------------|--|
| 1P - White/Royal Pinstripe | |
| 2P - White/Scarlet Pinstripe | |
| 4P - White/Black Pinstripe | |
| 7P - White/Navy Pinstripe | |
| 10P - White/Teal Pinstripe | |
| 22P - White/Purple Pinstripe | |